

Roll No.

--	--	--	--



INDIAN SCHOOL SALALAH
SECOND TERM EXAMINATION, FEB - MARCH 2026



SCIENCE (086)

Class: VII

Date: 05/03/2026

Time: 3 hrs.

Maximum Marks: 80

General Instructions:

- i) This question paper consists of 3 pages with 37 questions in all.*
- ii) All Questions are compulsory.*
- iii) Questions 1 -12 in Section A are multiple choice questions. Each question carries 1 mark. You should select one most appropriate option out of the four provided.*
- iv) Questions 13-25 in Section B carry 2 marks each.*
- v) Questions 26-34 in Section B carry 3 marks each.*
- vi) Questions 35 -37 in Section B carry 5 marks each.*

SECTION A

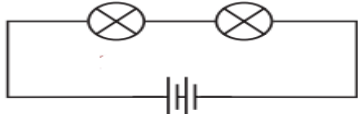
- 1 The property of metals that enables them to produce a ringing sound. 1
 - (A) Ductility
 - (B) Conductivity
 - (C) Malleability
 - (D) Sonority
- 2 Adolescence is the stage of life between- 1
 - (A) Birth and childhood
 - (B) Childhood and adulthood
 - (C) Adulthood and old age
 - (D) Infancy and adulthood from tear glands
- 3 Why are the electric wires used in homes usually covered with materials like plastic or rubber? 1
 - (A) To prevent rusting
 - (B) To make handling easier
 - (C) To prevent shock and short circuits
 - (D) To make them look beautiful
- 4 Which of the following changes do not occur in females during puberty? 1
 - (A) Deepening of voice
 - (B) Enlargement of breasts
 - (C) Growth of hair at armpit
 - (D) Menstruation

- 5 An instrument contains 3 inclined plane mirrors which produce multiple reflections and create beautiful patterns. Identify the name of the instrument. 1
- (A) Telescope
 - (B) Kaleidoscope
 - (C) Microscope
 - (D) Periscope
- 6 Breathing is a process that 1
- (i) provides oxygen to the body.
 - (ii) breaks down food to release energy.
 - (iii) helps the body to get rid of CO₂
 - (iv) produces water in the cells.
- Which of the following gives the correct combination of functions of breathing?
- (A) (i) and (ii)
 - (B) (ii) and (iii)
 - (C) (i) and (iii)
 - (D) (ii) and (iv)
- 7 A student observes that when iron nails are left in moist air, a reddish-brown layer forms on their surface. Which preventive method would be the best way to stop this from happening? 1
- (A) Keeping the nails in sunlight.
 - (B) Applying a coat of paint or oil on the nails.
 - (C) Washing the nails regularly with water.
 - (D) Storing the nails in an open container.
- 8 A bird swallows small stones along with their food. What would happen if they did not swallow these stones? 1
- (A) Food would not be ground properly in the gizzard.
 - (B) Food would not enter the stomach.
 - (C) Food digestion would stop completely.
 - (D) Respiration would be affected.
- 9 The thin wire that gives off light in an electric bulb. 1
- (A) Element
 - (B) Current
 - (C) Battery
 - (D) Filament
- 10 Acne and pimples on the face are due to the secretion of- 1
- (A) bile from the liver
 - (B) oil glands during puberty
 - (C) Enzymes in the digestive tract
 - (D) Tear from tear glands

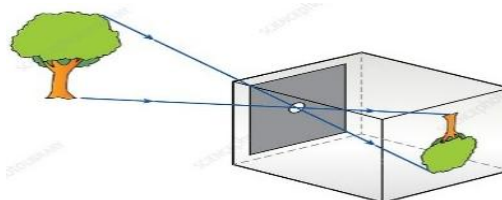
- 11 **Assertion:** The image formed by a plane mirror is laterally inverted. 1
Reason: The left and right sides of the object appear reversed in the mirror.
 The above question consists of two statements - Assertion (A) and Reason (R). Answer this question by selecting the appropriate option given below
- (A) Both A and R are true, and R is the correct explanation of the assertion.
 (B) Both A and R are true, but R is not the correct explanation of the assertion.
 (C) A is true, but R is false.
 (D) A is false, but R is true.

- 12 **Assertion:** The diaphragm plays an important role in breathing. 1
Reason: It relaxes and moves up during inhalation.
 The above question consists of two statements - Assertion (A) and Reason (R). Answer this question by selecting the appropriate option given below
- (A) Both A and R are true, and R is the correct explanation of the assertion.
 (B) Both A and R are true, but R is not the correct explanation of the assertion.
 (C) A is true, but R is false.
 (D) A is false, but R is true.

SECTION B

- 13 In the given figure, if the filament of one of the lamps is broken, will the other glow? Justify your answer.  2
- 14 a) Metal wires are used in musical instruments like the veena, sitar & guitar. Which property of metals makes them suitable for this purpose and why? 2
 b) Write an everyday use of Chlorine and Iodine.
- 15 a) A frog lives both on land and in water. Explain how its breathing mechanism helps it survive in both habitats. 2
 b) How do earthworms and fish breathe?
- 16 Define the following terms: (i) Alloy (ii) Galvanization 2
- 17 A torch is not functioning, though contact points in the torch are in working condition. What can be the possible reasons for this? (any four points) 2
- 18 During adolescence, the boys and girls undergo certain physical changes, Write any four common changes in both. 2
- 19 Jyothi collected a piece of copper, an iron nail, coal and sulphur, she tested their hardness by hammering each item on a hard surface. 2
 (a) What property of materials was Jyothi testing using a hammer?
 (b) Which materials from her collection are classified as metals and why?
- 20 Define an electric switch? What happens when the switch is in the 'OFF' position in an electric circuit? 2

- 21 a) Why is the moon not considered as a luminous body? 2
 b) Why cannot we see through a 'U' shaped or an 'N' shaped pipe? 2
- 22 Describe the main difference between the chemical properties of sodium and phosphorus with air. 2
- 23 The stomach produces acid, which is strong enough to digest food. Why does this acid not damage the stomach wall? 2
- 24 Anita avoids outdoor games and spends most of her time watching television. 2
 (a) How can this habit affect her growth during adolescence?
 (b) Suggest any tips to make her aware of the importance of proper growth during adolescence.
- 25 a) Identify the given symbol of the electric component. What does the triangle in the symbol indicate? 2
 b) What are the benefits of using it over traditional bulbs?
- 26 Give reason: 3
 (a) Metal like copper is commonly used for making electrical wires.
 (b) Handles of cooking utensils are made of wood or plastic.
 (c) Metallic oxide turns red litmus paper blue.
- 27 Classify the given materials and compare between them according to their ability for transmitting the light. (Two points each) 3
 Water, butter paper, frosted glass and air.
- 28 A torch is a portable electric lamp which uses two or more cells to light a small bulb. Electricity to the bulb in a torch is provided by the electric cell. 3
 (a) What is an electric cell?
 (b) What happens to electric cells when the chemicals are used up?
 (c) What is the direction of flow of electric current in an electric circuit?
- 29 Adolescents experience mood swings, some days they feel very energetic and happy, while other days, they feel low. What other behavioural changes are associated with this age? 3
- 30 Observe the figure and answer the questions that follow: 3
 a) Name the device given in the figure.
 b) On what principle does it work?
 c) What are the characteristics of the image formed on the screen of the given device?
- 31 a) Explain respiration with the help of a word equation. 3
 b) What are alveoli? Write the function of alveoli in lungs.
- 32 How does social media influence adolescents? Write two dos and don'ts to be followed on social media. 3
- 33 a) What is a shadow? Write the conditions needed for the formation of shadow. 3



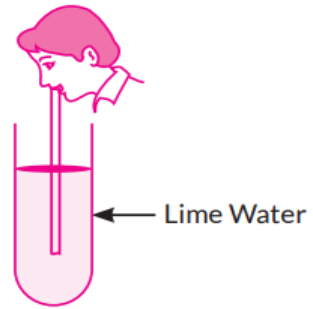
b) Why is the shadow of an aeroplane flying high in the sky not seen on the ground?

34 Raju designed an experiment taking test tube filled with lime water as shown in the figure. In test tube the exhaled air was blown through the pipe. 3

a) What do you think he is trying to investigate?

b) What is the composition of exhaled air?

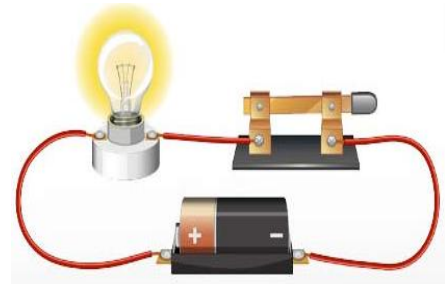
c) What happens to lime water when exhaled air is passed through it?



35 a) Draw the circuit diagram using symbols to represent the circuit shown in figure. 5

b) Identify and define the types of circuits shown in figure.

c) To complete an electric circuit, Sara is running short of connecting wires. Suggest what she may use instead of connecting wires and why?



36 a) A boy burnt Sulphur powder and collected the gas 'X' in a gas jar. Then he poured water into the jar to dissolve the gas 'X'. 5

i) Identify the gas 'X' collected in the gas jar.

ii) What is the solution formed when water is mixed with the gas 'X'?

iii) Will the solution turn red litmus blue? Why?

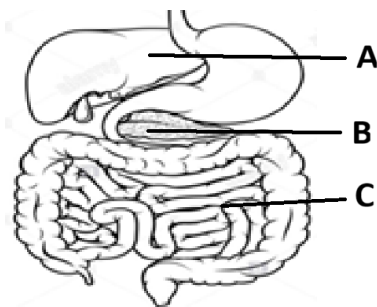
b) Name the following:

i) A metal and a non-metal that are liquid at room temperature.

ii) Metals that can be cut with a knife.

iii) The most malleable metals.

37 a) Label the parts A, B and C in the given figure- 5



b) The small intestine receives digestive juices from A and B structure associated with digestion. Explain the importance of these glands.

c) What is meant by villi? Write the function of villi in the process of digestion.
