



INDIAN SCHOOL SALALAH
ACADEMIC SESSION 2026-2027
SCHOOL UNIFORM SPECIFICATIONS



Parents are requested to ensure that their ward attends school daily in the prescribed uniform. Please note that the **School ID card is a mandatory part of the school uniform** and must be worn every day. Students should report to school neatly dressed and well groomed. Your cooperation in maintaining uniform discipline is sincerely appreciated.

1. KG I, II, III: (KG Uniform can be availed from the school's book store.)

1.1. BOYS

Soft Denim Blue shorts with Dark Red T- Shirt.
White knee length Socks & Black Shoes with
Velcro, which can be polished.



1.2. GIRLS

Soft Denim Blue one - piece frock with Red Soft T
- Shirt material for collar. White knee length Socks
& Black Shoes with Velcro, which can be polished.



=> Footwear for KG I, II, III.

BOYS SHOES (Velcro)



GIRLS SHOES



PLAIN WHITE - CALF LENGTH SOCKS



2. CLASSES I-IV.

2.1. Boys

- White half-sleeves shirt
- Red checkered shorts
- White knee-length socks
- Black Velcro shoes (polish able)



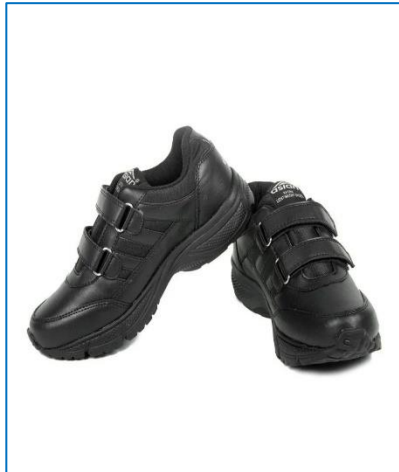
2.2. Girls

- White half-sleeves shirt
- Red checkered pinafore
- White knee-length socks
- Black Velcro shoes (polish able)
- Design as shown in the figure
- White scarf (if applicable)



Footwear for classes I to IV.

BOYS SHOES
(Velcro / Lace- Up)



GIRLS SHOES



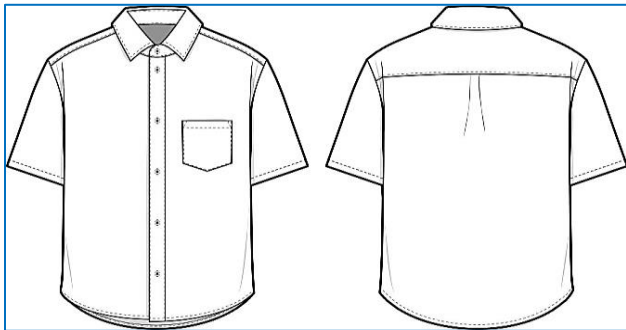
**WHITE - CALF LENGTH
SOCKS with RED STRIPES
ABOVE**



3. CLASSES V–VII

3.1. Boys

- White half-sleeve shirt with tie collar
- Navy blue tie with house-colour stripes (available at school's book store)
- Navy blue full length trousers
- Black leather belt with tongue / pin buckles. Decorative belts are not allowed
- Plain white calf-length socks
- Black lace-up/ velcro (which can be polished)
- Design as shown in the figure
- Pencil pants, skinny-fit, ankle-length, low-waist, torn, or tight-fitted trousers are strictly not allowed.
- Trousers should be of the prescribed school colour and pattern, properly stitched, full length, and worn with a belt and tucked-in shirt as per uniform rules.



Shirt : White
Pants : Navy Blue



3.2. Girls

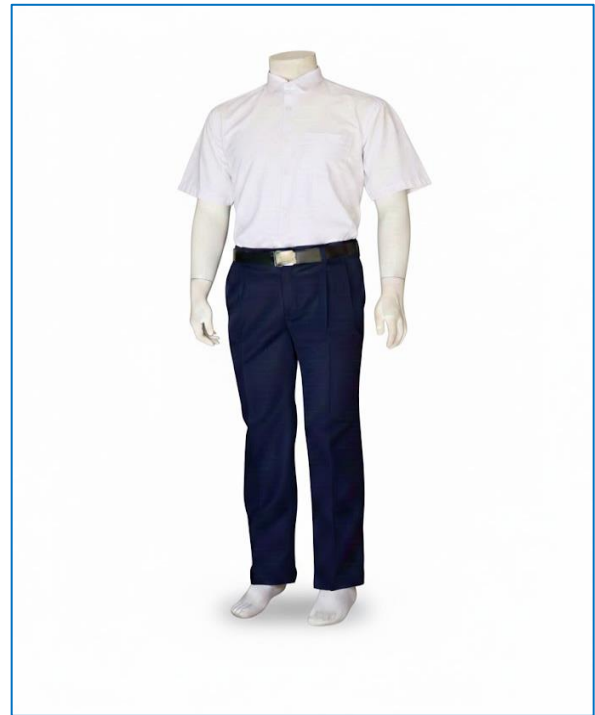
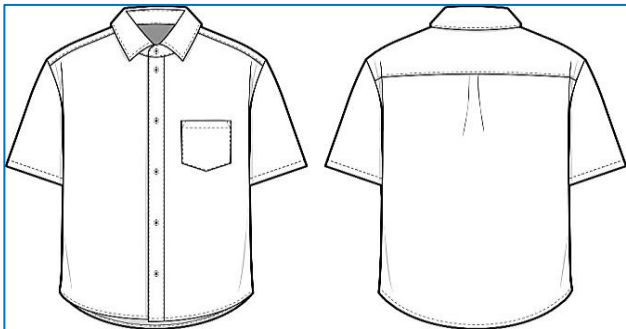
- White half-sleeve shirt with tie collar
- Navy blue pinafore (below knee-length) with same fabric belt as shown in the figure.
- Navy blue tie with house-colour stripes (available at school's book store)
- Plain white calf-length socks
- White scarf (if applicable)
- Black leather Velcro shoes (which can be polished)
- Two plaits with white ribbons / white hair band for short hair.
- Design as shown in the figure



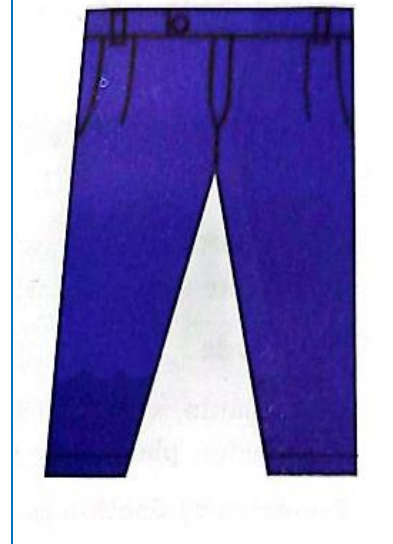
4. Classes VIII–XII

4.1. Boys

- White half-sleeve shirt with tie collar
- Navy blue tie with house-colour stripes (available at school's book store)
- Navy blue full length trousers
- Black leather belt with tongue / pin buckles. Decorative belts are not allowed
- Plain white calf-length socks
- Black shoes with lace/velcro (which can be polished)
- Pencil pants, skinny-fit, ankle-length, low-waist, torn, or tight-fitted trousers are strictly not allowed.
- Trousers should be of the prescribed school colour and pattern, properly stitched, full length, and worn with a belt and tucked-in shirt as per uniform rules.

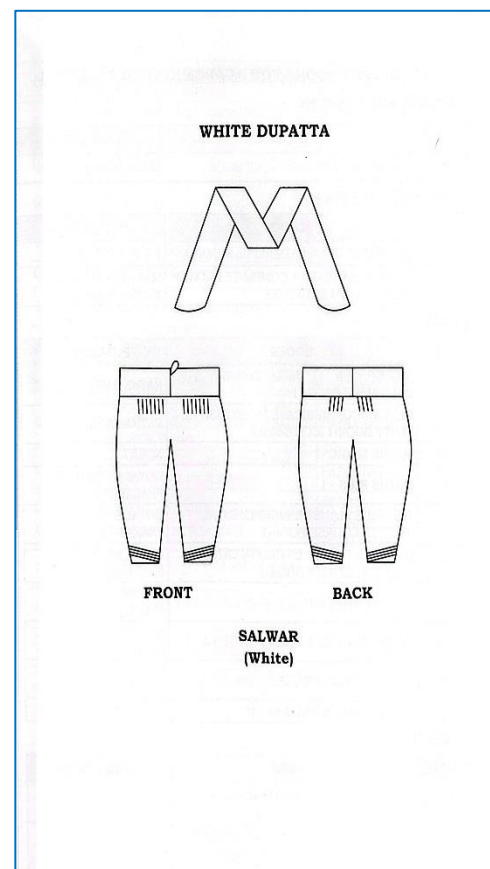
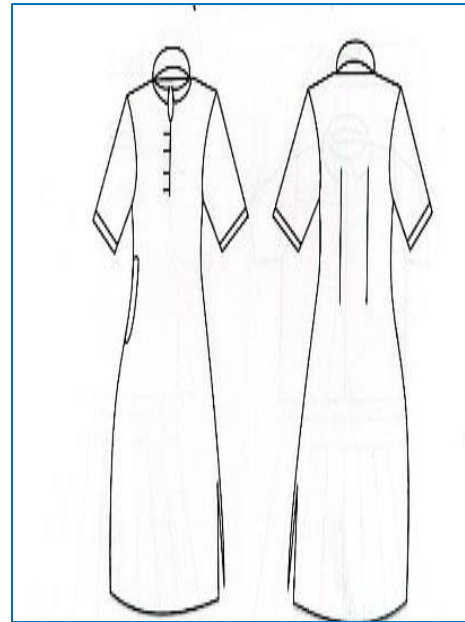


Shirt : White
Pants : Navy Blue



4.2. Girls

- Navy blue kameez with a closed-neck collar and three-quarter sleeves.
- Slits must be modest and not above the knee.
- White salwar in semi-Patiala style, as shown in the prescribed uniform image.
- White cotton dupatta.
- White scarf (if applicable).
- Plain white, calf-length socks.
- Black leather Velcro shoes (polish able).
- Hair must be neatly tied in two plaits with white ribbons; short hair should be secured with a white hairband.



Footwear for classes V to XII:

BOYS SHOES
(Velcro / Lace- Up)



GIRLS SHOES



PLAIN WHITE - CALF
LENGTH SOCKS



5. Scouts and Guides Uniform:

In accordance with the prescribed standards of the Bharat Scouts and Guides, the Guide uniform must be worn strictly as per the specifications given below. All units and members are required to ensure full compliance.

5.1. Scouts Uniform Specifications:

- Shirt:** Steel grey shirt with two patch pockets and shoulder straps.
- Sleeves:** Half sleeves ending 8 cm above the elbow, with turned and stitched-down cuffs measuring 4 cm in width.
- Shoulder Badge:** To be stitched on the right shoulder, just below the seam (badge will be supplied later).
- Right Sleeve Provision:** Four press-top buttons to be provided on the four sides of the right sleeve to fix a same-colour patch for displaying proficiency badges.
- Arm Patch Position:** The arm patch should be placed between the shoulder badge and the sleeve cuff.
- Trousers:** Navy-blue trousers with buckles of two-inch width may be worn.
- Footwear:** White calf length socks and Black shoes with lace / Velcro.



5.2. Guide Uniform Specifications:

The Guide uniform shall consist of the following items and shall conform strictly to the specifications given below:

1. Kameez:

- The kameez shall be light blue and the salwar deep blue, made of plain, non-transparent material.
- The dupatta shall be of the same colour as the salwar.
- Length: Up to the knees
- Fit: Not tight-fitted
- Sleeves: Half sleeves ending 8 cm above the elbow, with turned-up and stitched-down cuffs, 4cm wide
- Collar: Open sports collar
- Shoulders: Epaulettes on both shoulders
- Pockets: Two patch pockets (design as shown in the approved picture)

2. Salwar

- Semi- Patiala style (Not tight-fitted)

3. Badges and Patches

- The shoulder badge (to be supplied later) shall be stitched on the right shoulder below the seam.
- Provision shall be made for four press-type buttons on the four sides of the right sleeve to attach a same-colour patch for proficiency badges.
- White scarf (if applicable).
- The arm patch shall be positioned between the shoulder badge and the sleeve cuff.
- A button shall be stitched just above the cuff of the left sleeve.

- **4. Footwear:** White calf length socks and Black velcro shoes.



6. Winter Wear:

- Red Checkered Uniform (Classes I–IV): Only red or maroon sweaters are permitted.
- Blue & White Uniform (Classes V–XII): Only navy-blue sweaters are permitted.
- Hoodies, jackets, or designer woollens are not allowed as part of the school uniform.
- Only approved colours and patterns may be worn.



7. Mass Drill Uniform: All students from classes I to XII must wear their house-coloured T-shirts and track pants (available at the school bookstore), paired with white calf-length socks and white sports shoes with laces. The uniform should correspond to the house allotted to the student.

AMBER HOUSE



CORAL HOUSE



EMERALD HOUSE



SAPPHIRE HOUSE



Sports Footwear for classes I to XII:

**WHITE SPORTS SHOES
(LACE/ VELCRO)**



PLAIN WHITE CALF LENGTH SOCKS



Basic Grooming Rules for All Students

- Come to school in a clean and well-ironed uniform.
- Maintain neat, well-combed hair and follow the school haircut guidelines.
- Wear clean socks and well-polished shoes.
- Maintain daily personal hygiene.
- Avoid fancy hairstyles, hair colouring, or excessive styling products.
- Do not wear jewellery except permitted items (e.g., small ear studs and a simple watch).
- Carry a clean handkerchief and maintain good oral hygiene.

For Boys:

- Nails must be kept short, clean, and trimmed at all times.
- Fancy accessories are not allowed.

For Girls:

- Nails must be kept short, clean, and trimmed. Nail polish is not allowed.
- Henna (mehendi) may be applied only on special occasions with prior consent from the class teacher.
- Hair accessories such as pins, bands, and ribbons must be white only.

We seek the cooperation of all students and parents in maintaining these grooming standards to promote discipline, uniformity, and a positive school environment.
